

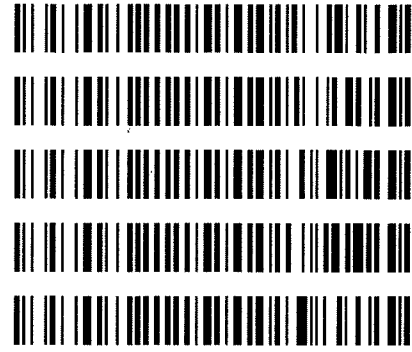
Reviewed on 2/28/17
Reviewed 3/7/17

CS

2/24/2017

Worklist: 1564

<u>LAB CASE</u>	<u>ITEM</u>	<u>TASK ID</u>	<u>DESCRIPTION</u>
C2017-0271	1	77630	AM 3 Urine Carboxy-THC
C2017-0281	1	77631	AM 3 Urine Carboxy-THC
C2017-0297	1	77632	AM 3 Urine Carboxy-THC
C2017-0309	1	77634	AM 3 Urine Carboxy-THC
C2017-0337	1	77633	AM 3 Urine Carboxy-THC



CS

Area Percent Report

Data Path : D:\DATA\2017\2-24-17 cTHC\
 Data File : 02201001.D
 Acq On : 24 Feb 2017 11:29
 Operator : Instrument 65198 - Tox
 Sample : negative control
 Misc : lot 12517; am 3
 ALS Vial : 22 Sample Multiplier: 1

Integration Parameters: autoint1.e
 Integrator: ChemStation

Method : D:\DATA\2016\852016a ta\psilocyn .D\TOXI-A 10115.M
 Title :

Signal : EIC Ion 371.00 (370.70 to 371.70): 02201001.D\data.ms

peak #	R.T. min	first scan	max scan	last scan	PK TY	peak height	corr. area	corr. % max.	% of total
1	3.823	3	8	18	BV 2	9739	153917	27.30%	14.870%
2	3.910	18	24	32	PV	41000	563820	100.00%	54.470%
3	3.992	32	39	48	PV	4400	70243	12.46%	6.786%
4	4.085	48	56	67	VV	6399	118239	20.97%	11.423%
5	4.431	112	121	136	VV 3	6223	128891	22.86%	12.452%

Sum of corrected areas: 1035109

Signal : EIC Ion 473.00 (472.70 to 473.70): 02201001.D\data.ms

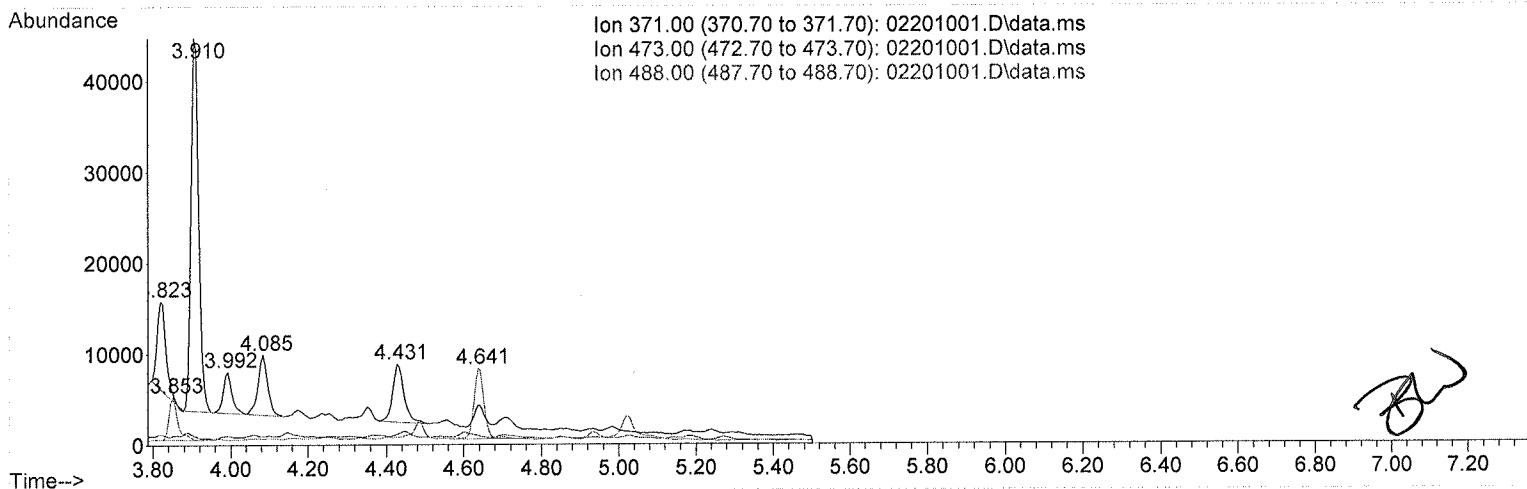
peak #	R.T. min	first scan	max scan	last scan	PK TY	peak height	corr. area	corr. % max.	% of total
No peaks were detected using the method integration parameters!									

Signal : EIC Ion 488.00 (487.70 to 488.70): 02201001.D\data.ms

peak #	R.T. min	first scan	max scan	last scan	PK TY	peak height	corr. area	corr. % max.	% of total
1	3.853	8	13	28	BV 2	4551	73481	52.96%	34.623%
2	4.641	149	160	178	BB	7746	138749	100.00%	65.377%

Sum of corrected areas: 212230

TOXI-A 10115.M Fri Feb 24 12:19:32 2017



Area Percent Report

Data Path : D:\DATA\2017\2-24-17 cTHC\
 Data File : 02101002.D
 Acq On : 24 Feb 2017 11:38
 Operator : Instrument 65198 - Tox
 Sample : positive control
 Misc : FE03121501 in neg lot 12517; am 3
 ALS Vial : 21 Sample Multiplier: 1

Integration Parameters: autoint1.e
 Integrator: ChemStation

Method : D:\DATA\2016\852016a ta\psilocyn .D\TOXI-A 10115.M
 Title :

Signal : EIC Ion 371.00 (370.70 to 371.70): 02101002.D\data.ms

peak #	R.T. min	first scan	max scan	last scan	PK TY	peak height	corr. area	corr. % max.	% of total
1	3.815	3	6	16	PH 2	11677	263045	52.43%	16.635%
2	3.900	16	22	31	VV	30522	501753	100.00%	31.731%
3	3.983	31	37	47	VV	5227	137474	27.40%	8.694%
4	4.075	47	55	65	VV	6165	172320	34.34%	10.898%
5	4.420	111	119	137	VV 2	5922	161022	32.09%	10.183%
6	<u>4.693</u>	163	169	188	VB	18611	<u>345657</u>	68.89%	21.859%

Sum of corrected areas: 1581272

Signal : EIC Ion 473.00 (472.70 to 473.70): 02101002.D\data.ms

peak #	R.T. min	first scan	max scan	last scan	PK TY	peak height	corr. area	corr. % max.	% of total
1	4.694	163	170	189	BB	8088	<u>147267</u>	100.00%	100.000%

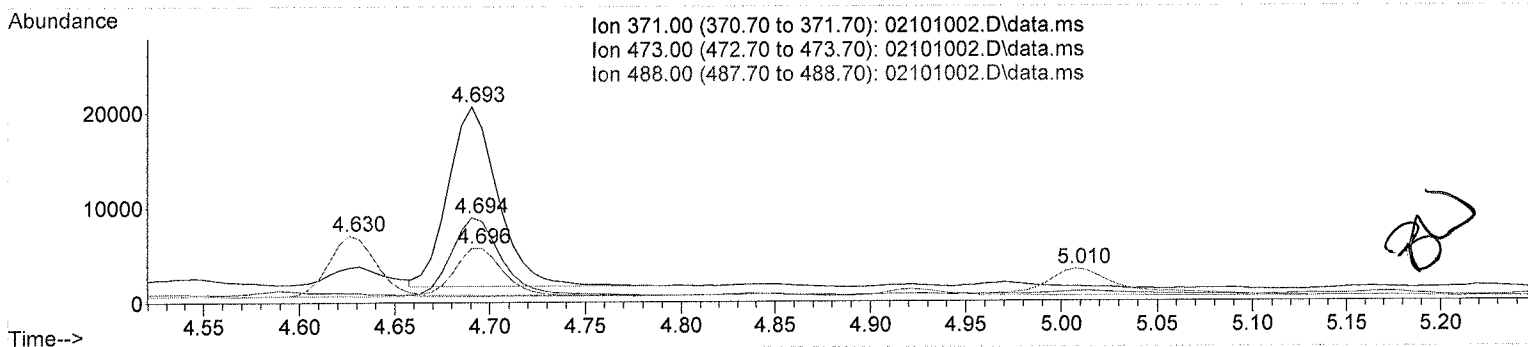
Sum of corrected areas: 147267

Signal : EIC Ion 488.00 (487.70 to 488.70): 02101002.D\data.ms

peak #	R.T. min	first scan	max scan	last scan	PK TY	peak height	corr. area	corr. % max.	% of total
1	3.844	6	12	25	BB 2	3366	58494	53.06%	17.271%
2	4.630	150	158	164	BV	6289	110247	100.00%	32.551%
3	4.696	164	170	185	VB	5092	<u>92191</u>	83.62%	27.220%
4	5.010	219	228	251	VB 2	2768	<u>77759</u>	70.53%	22.959%

Sum of corrected areas: 338691

TOXI-A 10115.M Fri Feb 24 12:17:37 2017



Area Percent Report

Data Path : D:\DATA\2017\2-24-17 cTHC\
 Data File : 02101019.D
 Acq On : 24 Feb 2017 14:16
 Operator : Instrument 65198 - Tox
 Sample : positive control
 Misc : FE03121501 in neg lot 12517; am 3
 ALS Vial : 21 Sample Multiplier: 1

Integration Parameters: autoint1.e
 Integrator: ChemStation

Method : D:\DATA\2016\852016a ta\psilocyn .D\TOXI-A 10115.M
 Title :

Signal : EIC Ion 371.00 (370.70 to 371.70): 02101019.D\data.ms

peak #	R.T. min	first scan	max scan	last scan	PK TY	peak height	corr. area	corr. % max.	% of total
1	3.810	3	5	16	BV 2	6327	93813	10.67%	5.179%
2	3.896	16	21	31	PV	43464	580193	66.00%	32.028%
3	3.978	31	37	46	PV 3	2917	44165	5.02%	2.438%
4	4.072	46	54	64	PV	5056	91617	10.42%	5.057%
5	4.415	110	118	130	PV 2	6322	122664	13.95%	6.771%
6	<u>4.688</u>	161	169	192	VV	39020	<u>879059</u>	100.00%	48.526%

Sum of corrected areas: 1811511

Signal : EIC Ion 473.00 (472.70 to 473.70): 02101019.D\data.ms

peak #	R.T. min	first scan	max scan	last scan	PK TY	peak height	corr. area	corr. % max.	% of total
1	4.690	160	169	192	PV	17296	<u>394012</u>	100.00%	100.000%

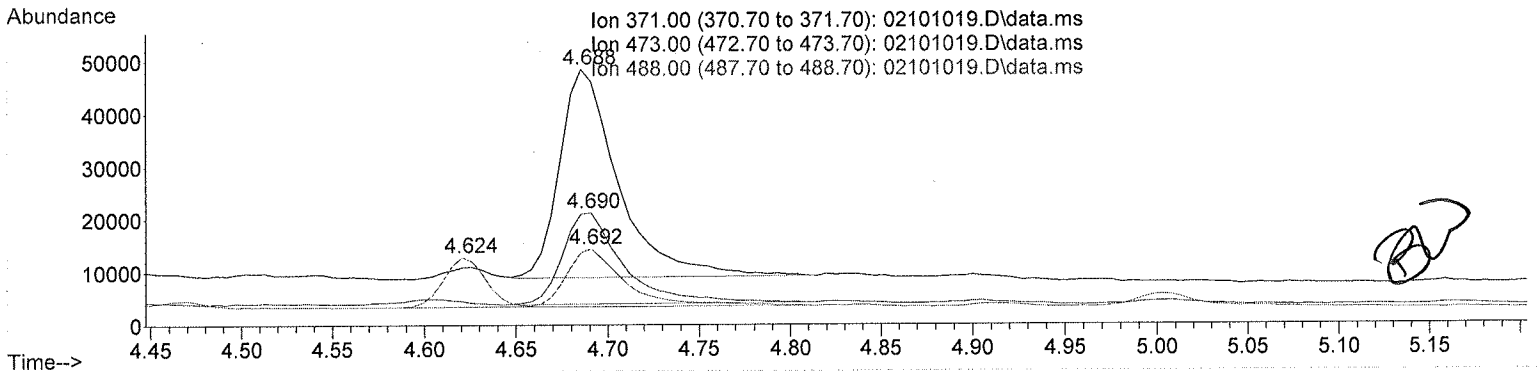
Sum of corrected areas: 394012

Signal : EIC Ion 488.00 (487.70 to 488.70): 02101019.D\data.ms

peak #	R.T. min	first scan	max scan	last scan	PK TY	peak height	corr. area	corr. % max.	% of total
1	3.841	5	11	39	BV 2	4085	63467	25.99%	13.862%
2	4.624	145	157	163	BV 2	9194	150216	61.52%	32.808%
3	4.692	163	169	192	VV	10841	<u>244184</u>	100.00%	53.331%

Sum of corrected areas: 457867

TOXI-A 10115.M Fri Feb 24 14:24:53 2017



Area Percent Report

Data Path : D:\DATA\2017\2-24-17 cTHC\
 Data File : 02301004.D
 Acq On : 24 Feb 2017 11:57
 Operator : Instrument 65198 - Tox
 Sample : brc3 control
 Misc : lot 68430; am 3
 ALS Vial : 23 Sample Multiplier: 1

Integration Parameters: autoint1.e
 Integrator: ChemStation

Method : D:\DATA\2016\852016a ta\psilocyn .D\TOXI-A 10115.M
 Title :

Signal : EIC Ion 371.00 (370.70 to 371.70): 02301004.D\data.ms

peak #	R.T. min	first scan	max scan	last scan	PK TY	peak height	corr. area	corr. % max.	% of total
1	3.898	8	22	29	BV	4965	68052	8.09%	6.998%
2	4.689	148	169	184	BB	48477	<u>840929</u>	100.00%	86.481%
3	4.905	197	209	219	BB	3496	63406	7.54%	6.521%

Sum of corrected areas: 972387

Signal : EIC Ion 473.00 (472.70 to 473.70): 02301004.D\data.ms

peak #	R.T. min	first scan	max scan	last scan	PK TY	peak height	corr. area	corr. % max.	% of total
1	4.691	146	169	189	BB	21725	<u>400402</u>	100.00%	54.838%
2	4.907	201	209	219	BB	2483	45077	11.26%	6.174%
3	5.172	249	259	275	BB	13806	284675	71.10%	38.988%

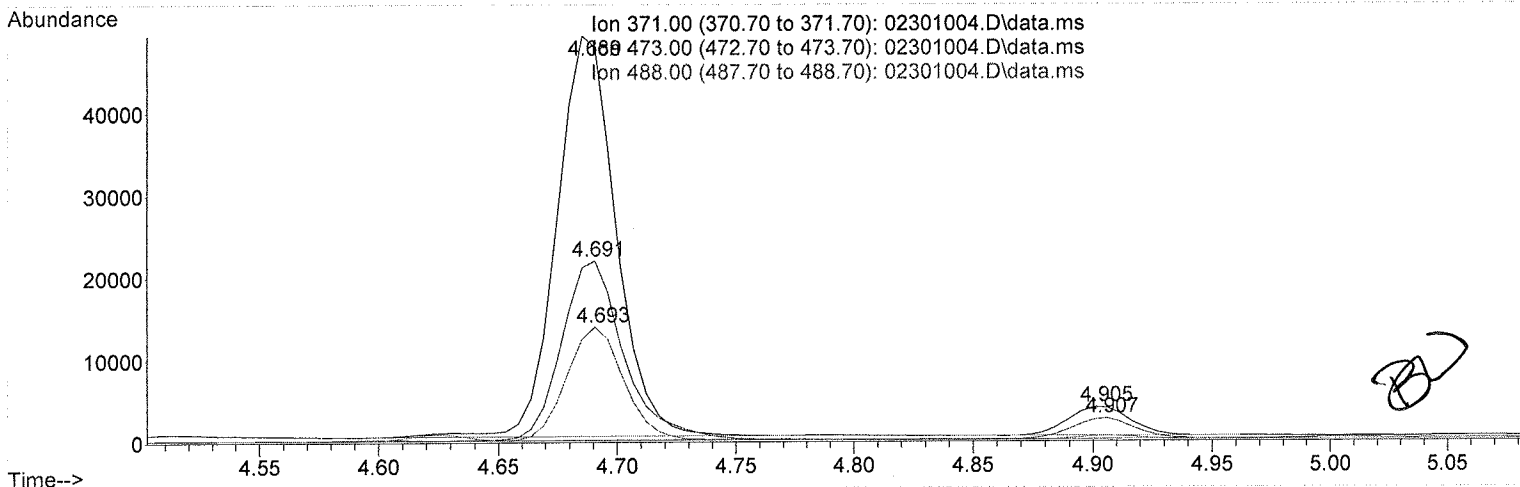
Sum of corrected areas: 730155

Signal : EIC Ion 488.00 (487.70 to 488.70): 02301004.D\data.ms

peak #	R.T. min	first scan	max scan	last scan	PK TY	peak height	corr. area	corr. % max.	% of total
1	4.693	162	169	179	VB	13556	<u>228526</u>	100.00%	100.000%

Sum of corrected areas: 228526

TOXI-A 10115.M Fri Feb 24 12:18:16 2017



2.4.4 Carboxy-THC QC Calculations

Run Date: 2/24/2017

Case Calculations:

Lab Case #: brc3

EIC Ion 371 Corr. Area: 840929

EIC Ion 473 Corr. Area: 400402

EIC Ion 488 Corr. Area: 228526

473:371 Ratio: 0.476

488:371 Ratio: 0.272

Quality Control Calculations:

Retention Time acceptable range: ~~4.588~~ ^{4.593} to ~~4.793~~ ^{4.788} *Byylee*
3-4-17

	<i>1st ctrl</i>	<i>2nd ctrl</i>
EIC Ion 371 Corr. Area:	<u>345657</u>	<u>879059</u>
EIC Ion 473 Corr. Area:	<u>147267</u>	<u>394012</u>
EIC Ion 488 Corr. Area:	<u>92191</u>	<u>244184</u>

Approximate minimum corrected area of 371 ion: ~ **69131**

		Ratio of 473:371			
<i>1st ctrl</i>	<u>0.426</u>	<i>2nd ctrl</i>	<u>0.448</u>	avg.	<u>0.437</u>
Accepted Range (+/- 20%)		<u>0.350 - 0.525</u>			

		Ratio of 488:371			
<i>1st ctrl</i>	<u>0.267</u>	<i>2nd ctrl</i>	<u>0.278</u>	avg.	<u>0.272</u>
Accepted Range (+/- 20%):		<u>0.218 - 0.327</u>			

Carboxy-calculation sheet
Revision 0 effective date 10/23/13
Issuing authority: Quality Manager

